

Lineup Multiple Use

	Size	Taper	Length	Quantity Per Unit
Glide Path Kit				
ORIFICE OPENER	025	14	18mm	3pcs/kit
JIZAI GLIDER	013	04	21mm	
			25mm	
JIZAI 020 04	020	04	28mm	
			31mm	
Shaping Kit				
JIZAI I	025	04	21mm 25mm 28mm 31mm	3pcs/kit
JIZAI II	025	06		
JIZAI III	035	04		

	Size	Taper	Length	Quantity Per Unit
Individual Pack				
ORIFICE OPENER	025	14	18mm	3pcs/pack
JIZAI GLIDER	013	04	21mm 25mm 28mm 31mm	
020 04	020	04		
025 04 (JIZAI I)	025	04		
030 04	030	04		
035 04 (JIZAI III)	035	04		
040 04	040	04		
045 04	045	04		
050 04	050	04		
025 06 (JIZAI II)	025	06		
030 06	030	06		
035 06	035	06		



Size Identification

Rubber Stopper Color

18mm

21mm

25mm

28mm

31mm

Color Code

013(GLIDER)

020

025

030

035

040

045

050

Related Products for Patency

D FINDERS

Size

08, 10, 12, 15

Length

21mm, 25mm

GLIDE FINDERS

Size

08, 10, 12, 15

Length

21mm, 25mm

MANI, INC.

8-3 KIOHARA INDUSTRIAL PARK, UTSUNOMIYA, TOCHIGI, 321-3231, JAPAN  
Tel: +81-28-667-8592 E-Mail: dental.international@mani.inc  
URL: www.mani.co.jp/en/



Enhancing Safety, Ensuring Precision, Perfecting Performance



NiTi Rotary File





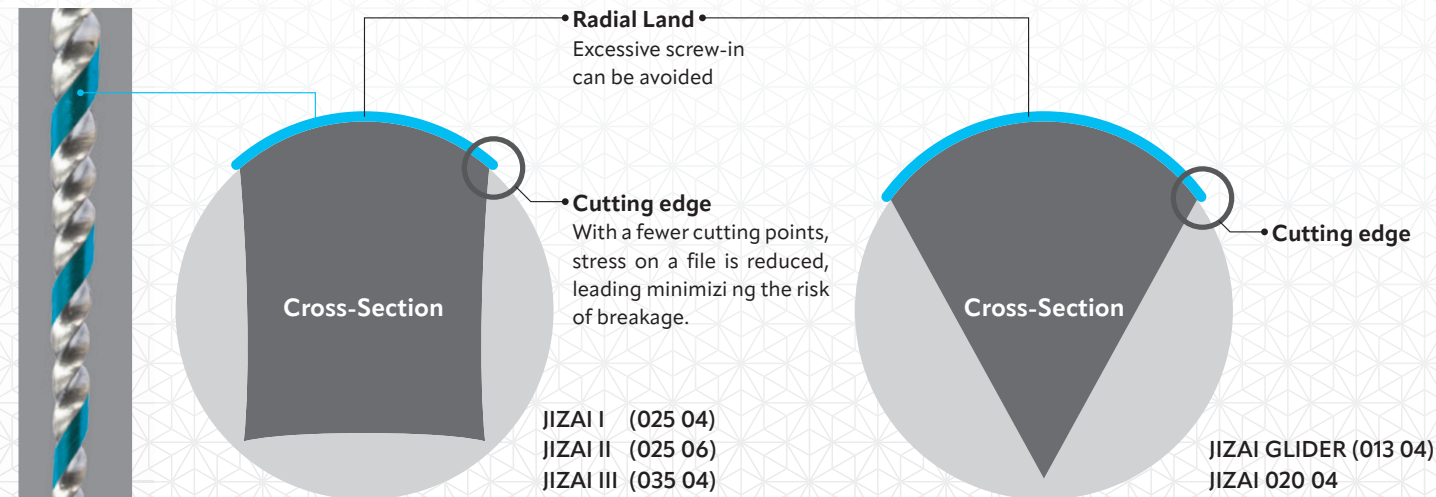
# To resolve problems in root canal treatment

With a focus on files that enhance safety and comfort in dental procedures, JIZAI demonstrates our commitment to superior **operability**, **trackability**, and **durability**. JIZAI is engineered to provide reliable support in navigating curved root canals, minimizing practitioner workload and maximizing comfort.

## Product Design

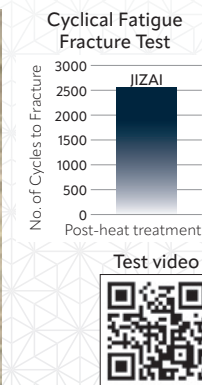
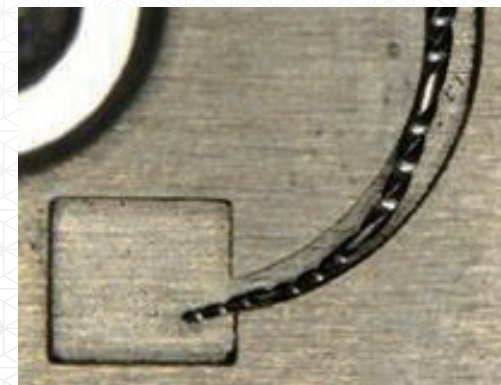
### Good Control with Reduced Screw-in effect

Specific Cross-section is featured for each file size



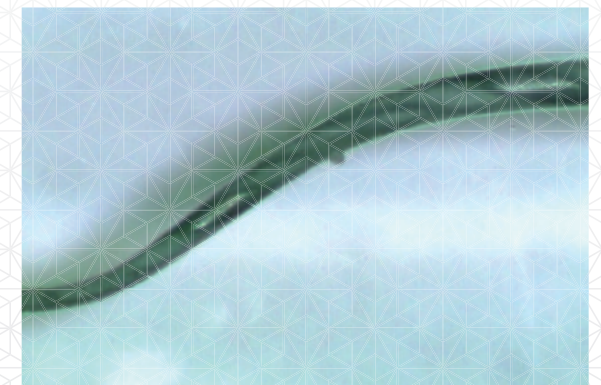
### Engineered to eliminate concerns for fracture: Superior Durability

Heat treatment results in a file that is both flexible and durable, reducing risk of fatigue fracture. Test was conducted on how many rotations it would take for a file to break in a simulated metal root canal model. (500min<sup>-1</sup>)



### Reliable Partner in Complex Root-Canal Preparation: Excellent Centering Ability

Supports consistent shaping in external and internal curves, even in complex root canals.



## Sequence

