

MANI TROCAR KIT

TROCAR KIT S

3 Kits/ Box

| Description | Color Coding | Order No. |
|------------------|--------------|-----------|
| TROCAR KIT 27G S | <div></div> | MTK27S |
| TROCAR KIT 25G S | <div></div> | MTK25S |
| TROCAR KIT 23G S | <div></div> | MTK23S |

TROCAR S

6 Pcs./ Box

| Description | Color Coding | Order No. |
|--------------|--------------|-----------|
| TROCAR 27G S | <div></div> | MTR27S |
| TROCAR 25G S | <div></div> | MTR25S |
| TROCAR 23G S | <div></div> | MTR23S |

* Individually packed – ideal for backup

INFUSION CANNULA S

6 Pcs./ Box

| Description | Color Coding | Order No. |
|------------------------|--------------|-----------|
| INFUSION CANNULA 27G S | <div></div> | MIC27S |
| INFUSION CANNULA 25G S | <div></div> | MIC25S |
| INFUSION CANNULA 23G S | <div></div> | MIC23S |

* Individually packed – ideal for backup



MANI, INC.

8-3 KIYOHARA INDUSTRIAL PARK, UTSUNOMIYA,
TOCHIGI, 321-3231, JAPAN
Phone: +81-28-667-7565 / E-mail: seg-ovs@mani.inc /
URL: www.mani.co.jp/en/



Note : Design and specifications are subject to change without notice.

S0011



THE BEST QUALITY IN THE WORLD,
TO THE WORLD.

MANI TROCAR KIT



MANI TROCAR KIT

Ultimate Sharpness, Minimal Stress

TROCAR S

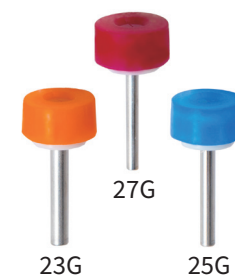
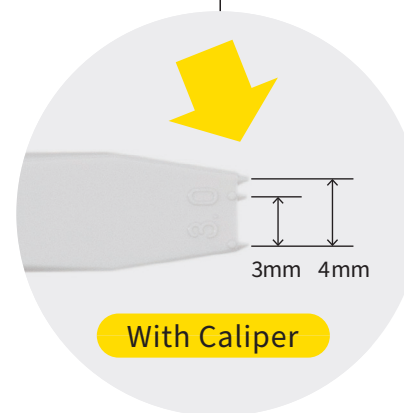
Expanded product line.
Individually packed items reduce waste
and are ideal as a backup.



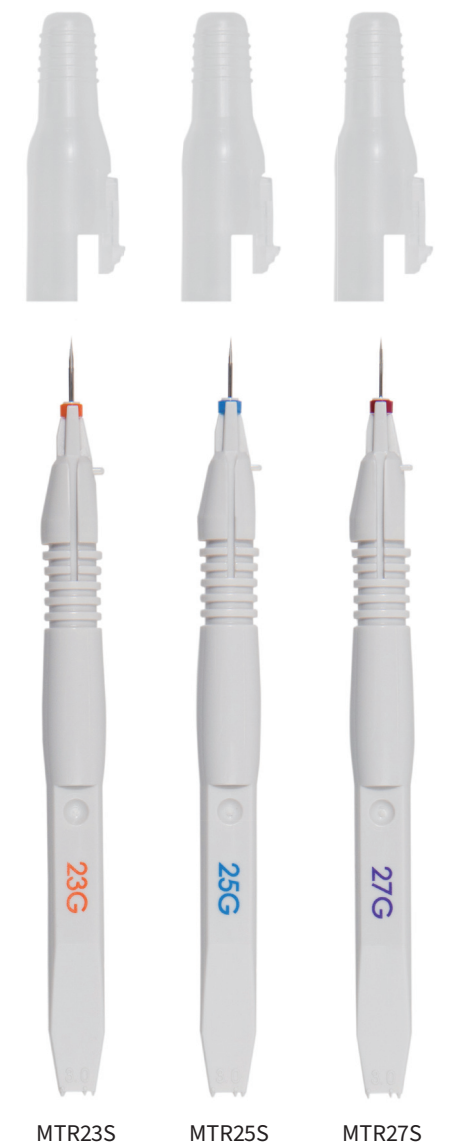
Ergonomic handle

Reliable closure valve
prevents leaks

Atraumatic entry



Actual size



INFUSION CANNULA S

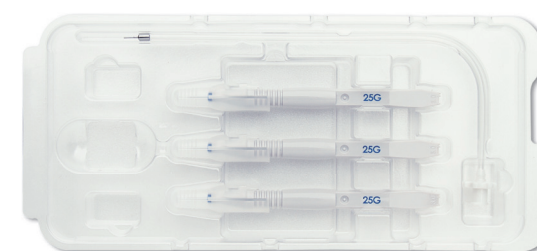
Easily connected without
valve removal

Inserts directly into port

Connection status

* Confirm the absence of any gap.

TROCAR KIT S



1 Surgery Case (1 Pack)

- TROCAR S × 3 Pcs.
- INFUSION CANNULA S × 1 Pc.

* Individually packaged trocars are available for use as a
fourth port or as a backup.

When holding the cannula

This product can be inserted into the sclera without holding the valved cannula. Withdraw the trocar handle after scleral placement. If the valved cannula does not detach easily, withdraw the trocar handle while gently holding the cannula with fine forceps. Take care not to touch the stop at the end of the handle as shown in the figure at right then position the cannula.

