

MANI, INC.

8-3 Kiyohara Industrial Park, Utsunomiya, Tochigi, 321-3231 JAPAN

Oph.Sec./PHONE:81 (28) 667-7565 FAX:81 (28) 667-6177

E-mail: ophthalmic@ms.mani.co.jp

Announcement of MANI LRI Knife

Dear our valued partners,

Thank you very much for your usual earnest promotion for MANI Ophthalmic products.

We would like to announce that MANI Ophthalmic Section will launch new products as stated below:

Release Date

December 19th, 2012

Product Information

Disposable Ophthalmic Knife (E.O.G. sterilized) for LRI (Limbal Relaxing Incision) operation.

ORDER#	Product Name, Incision Depth
MLR55	LRI 550 μ m
MLR60	LRI 600 μ m

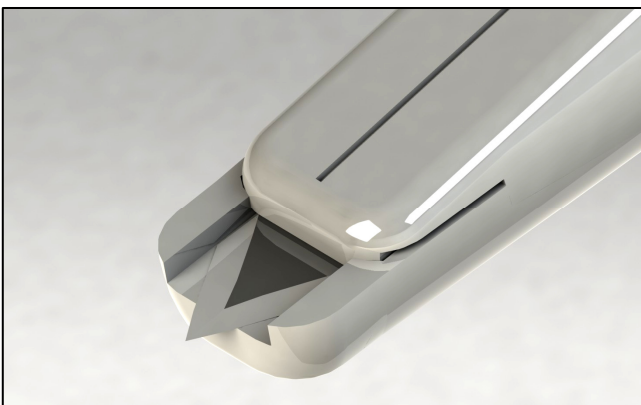
6pcs/1Box

* Pricing information will be forwarded under separate cover.

* Please note in advance that they continued to be in short supply for a while after debut.

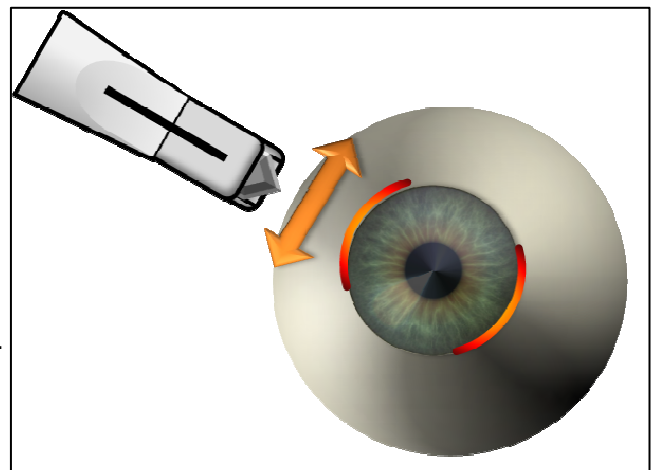
* Autoclave re-sterilization is strictly prohibited because cut depth would be changed to inadequate size.

Features of Product



Quality & Sharpness Stability.

MANI's ultimate sharpness & complete quality control enables precise, stable depth incision.



Universal Design.

Distinguishing guard shape with slit-type blade.
You can make incisions BOTH in left or right directions.
Now, forget about your dominant hand.