

MANI®

FOR ADVANCED TREATMENT

SURGICAL BURS

- LONG TAPER CARBIDE BURS -



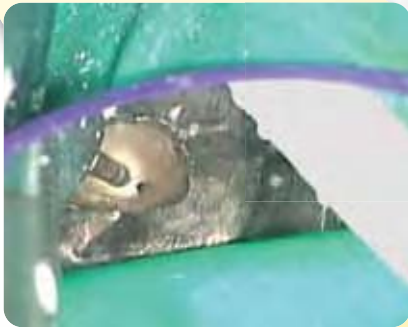
MANI, INC.



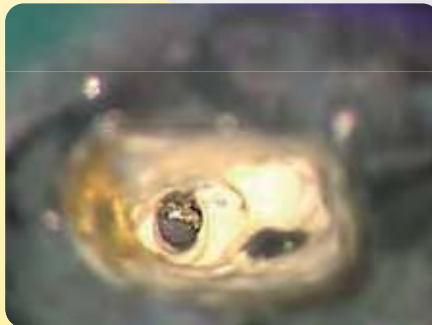
For advanced treatment ——— We serve with micro processing technology

Enables effective removal of Metal Posts, Fiber Cores, and Canal Orifice Calcifications. The long taper permits unobstructed vision of working field. Eliminates concerns of turbine damage by halfway chucking.

Images provided by Dr. Norihiro Sawada - Sawada Dental Office, Yotsuya, Tokyo.



① A removal performed with regular-length carbide.



② Remaining pieces of metal in deep pockets are extremely difficult to remove with regular-length burs.







③ Surgical burs allow a clear field of view for easy removal, and eliminate the need for potentially damaging halfway chucking.



Take Note


Maximum allowable engine speeds: 120,000min⁻¹
For use with contra-angle hand-piece (micromotor) at 4x and 5x engine speeds.



	
1.00 25.00	1.00 28.00
25mm # 2 001/010	28mm # 2 001/010
ROUND(PLAIN)	

	
2.00 25.00	2.00 28.00
25mm # 330 232/008	28mm # 330 232/008
PEAR(PLAIN)	

	
4.00 25.00	4.00 28.00
25mm # 1557 137/010	28mm # 1557 137/010
CYLINDER ROUND END(CROSSCUT)	


1.00 25.00
25mm # 2 001/010
ROUND(PLAIN)

◀ Surgical bur sizes

4pcs./pack

— Bur Shape (Actual Size)

— Length of working part

— Overall length

— Order number

— Shape/Maximum diameter

— Shape

⚠ CAUTION When using surgical burs:

120,000 min⁻¹

[Usage Instructions] ●To prevent infection, sterilize using high-pressure steam sterilization and confirm sterilization before use. ●Do not exceed the prescribed speed parameters, as doing so may result in tooth damage or injury. ●Do not surpass the set usage limits; and Operate in Feather Touch mode. (*1) ●Use surgical burs with a dental hand-piece. Follow the instructions, package inserts and labels provided for the dental hand-piece carefully when attaching the bur, assuring that the shank is fully inserted to prevent halfway chucking. ●Operate hand-piece only with the parts provided in the original packaging. ●Test the unit for correct spin and confirm that there are no manufacturing defects before using on the patient. ●Prior to operation, check that the bur has no deformities, cuts, cracked skin or discoloration. ●Avoid using at acute angles or with excessive pressure, as bur heads that are long, thin or large are prone to breaking and bending. ●Keep burs and blades in a cooled irrigation tray before use. If an irrigation tray is unavailable, use a similar container to keep the instruments irrigated and cooled. ●Wear protective eyewear and mask when using this product to prevent accidental inhalation of small particles. ●Use a rubber dam on the patient to prevent accidental ingestion of particles. ●Do not use this product for anything other than its stated purpose. ●This product is for use by licensed dental practitioners only. ●Dispose of this product in a medical waste container. ●Do not use if the product is damaged or contaminated. ●After use, the product should immediately be cleaned with a medical cleanser and brush. Thoroughly remove any biological fluid, tissue or other material. ●When washing in an ultrasonic bath, degradation of blades by placing the instruments in a stand before cleaning. ●Handle product carefully, avoiding blades. ●When using 25mm or 28mm length bur, use the contra-angle 4x and 5x speed hand-piece (with micro-motor) at indicated engine speeds (*1)

(*1) Indicated engine speed: Individual configurations vary; see instructions on the package before use.

The design and specifications subject to be changed without previous notice for improvement.

MANI[®]
MANI, INC.

8-3 KIYOHARA INDUSTRIAL PARK, UTSUNOMIYA, TOCHIGI, 321-3231, JAPAN

●Phone : +81-28-667-8592

●Facsimile : +81-28-667-8593

●E-mail : dental.exp@ms.mani.co.jp

●URL : http://www.mani.co.jp

D05310